

# FishPro™ Trophy 170

Additional tech and comfort features for an elevated sportfishing experience.




 Shark Grey and Orange Crush

Rotax® 1630 ACE™ - 170

ST3® Hull

iDF - Intelligent Debris-Free System

CAPACITY

Rider Capacity	
Weight Capacity	600 lb / 273 kg
Rear Platform Capacity (without passenger)	221 lb / 100 kg
Fuel Capacity	18.5 US gal / 70 L
Glove Box	0.8 US gal / 2.9 L
Front Bin	25.3 US gal / 96 L
LinQ Fishing Cooler	13.5 US gal / 51 L
Storage Capacity Total	39.6 US gal / 149.9 L*

DIMENSIONS

Length (bumper to bumper)	146.8" / 373 cm
Width	49.6" / 126 cm
Height	45.3" / 115 cm

HULL

Type	ST3 Hull
Material	Fiberglass

FEATURES

- Ergolock™ two-piece Explorer Touring seat with modular swivel seat
- Seat strap
- iBR® - Intelligent Brake & Reverse\*\*
- RF D.E.S.S.™ key
- VTS™ (Variable Trim System)
- Boarding ladder
- Watertight phone compartment
- Direct-access front storage
- Storage bin organizer
- Wide angle mirrors
- Handle grips with palm rest
- Footwell carpets
- Large swim platform
- 5 fishing rod holders
- 2 LinQ® front supports
- Cup holder
- USB port
- Tilt steering
- Ski tow eye

ROTAX ENGINE

1630 ACE - 170

Horsepower	170 hp
Intake System	Naturally aspirated
Displacement	1,630 cc
Cooling	Closed-Loop Cooling System (CLCS)
Reverse System	Electronic iBR
Fuel Type	87 octane
Throttle System	iTC™ (Intelligent Throttle Control)
Exhaust System	D-Sea-Bel™ system

GAUGE

Type of Gauge	10.25 in. touchscreen display
Main Functions	<ul style="list-style-type: none"><li>• BRP Connect</li><li>• Music</li><li>• Navigation</li><li>• Bluetooth® connectivity</li><li>• Speedometer</li><li>• RPM</li><li>• Clock</li><li>• VTS</li><li>• Fuel consumption</li><li>• Fuel autonomy</li><li>• Water temperature</li><li>• Vehicle hours</li></ul>

iTC System - Mode

Eco®, Sport, Speed Regulator, Trolling (Slow Speed) & Accessory Mode

WEIGHT

Dry Weight	898 lb / 407 kg
------------	-----------------

WARRANTY

BRP limited warranty covers the watercraft for one year.

\*Total storage capacity includes LinQ fishing cooler. \*\*Electronic brake, neutral and reverse.



What's New

- Garmin® 9" touchscreen GPS & Fish Finder
- Hydraulic steering damper
- 10.25 in. touchscreen display

Key Features

- Advanced battery system
- Modular swivel seat
- Quick-connect livewell
- LinQ fishing cooler (13.5 US gal / 51 L)
- Anchoring system
- Rear Deck Extension with LinQ
- BRP Audio - Premium System
- Handlebar with adjustable riser



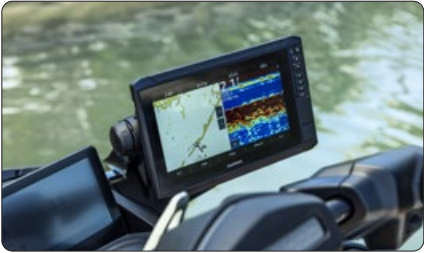
Shark Grey and Orange Crush

Feature Highlights



Modular Swivel Seat

Installs in seconds for a game-changing experience. Both the pedestal and backrest stow cleverly away when not in use.



Garmin 9" Touchscreen GPS & Fish Finder

A top-of-the-line touchscreen navigation, charting and fish finder system using an in-hull transducer and mid-CHIRP sonar. Includes token for access to free upgraded regional maps.



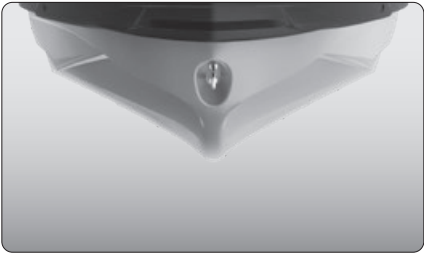
Quick-Connect Livewell

Turn the LinQ Fishing Cooler into a livewell in seconds. An integrated pump constantly feeds fresh water into the reservoir keeping your catch or your bait alive all day.



Rotax 1630 ACE - 170 Engine

The Rotax 1630 ACE - 170 combines plenty of naturally aspirated power and economy, meaning the adventure can be exhilarating and prolonged.



ST3 Hull

An innovative hull that sets the benchmark for rough water handling, stability, and offshore performance.



10.25 in. Touchscreen Display

Bring your on-water experience to another level with this premium and elegant touchscreen display developed specifically for Sea-Doo riders. Enjoy enhanced connectivity and intuitive features including ride statistics, a compass, media control, marine navigation with the BRP GO! app and much more.