

# GTI™ SE 130 / 170

More convenience and  
comfort for days of family fun.



- NEW Eclipse Black and Laguna Green
- Teal Blue and Manta Green

## Rotax® 1630 ACE™ - 130 / 170

## GTI® Hull

## BRP Audio - Premium System (optional)

### CAPACITY

Rider Capacity	3
Weight Capacity	600 lb / 273 kg
Fuel Capacity	18.5 US gal / 70 L
Glove Box	2.3 US gal / 8.8 L
Front Bin	38 US gal / 144 L
Storage Capacity Total	40.3 US gal / 152.8 L

### DIMENSIONS

Length (bumper to bumper)	130.7" / 332 cm
Width	49.2" / 125 cm
Height	44.9" / 114 cm

### HULL

Type	GTI Hull
Material	Polytec™

### FEATURES

- Ergolock™ two-piece touring seat
- Seat strap
- RF D.E.S.S.™ key
- Large front storage
- Watertight phone compartment
- LinQ® attachment system
- Wide-angle mirrors
- Handle grips with palm rest
- Footwell carpets
- Large swim platform
- Tow hook

### ROTAX ENGINE

	1630 ACE - 130	1630 ACE - 170
Model	GTI SE 130	GTI SE 170
Horsepower	130 hp	170 hp
Intake System	Naturally aspirated	
Displacement	1,630 cc	
Cooling	Closed-Loop Cooling System (CLCS)	
Reverse System	Electronic iBR**	
Fuel Type	87 octane	
Throttle System	iTC™ (Intelligent Throttle Control)	
Exhaust System	D-Sea-Be!™ system	

### GAUGE

Type of Gauge	4.5 in. digital display	
Main Functions	• Speedometer • RPM • Clock	• VTS™ • Fuel autonomy • Vehicle hours
iTC System - Mode	Eco®, Sport, Speed Regulator & Slow Speed Mode	

### WEIGHT

Dry Weight	741 lb / 336 kg 761 lb / 345 kg (with sound system)
------------	--

### WARRANTY

BRP limited warranty covers the watercraft for one year.

\*Electronic brake, neutral and reverse.

What's New

- iDF - Intelligent Debris-Free System

Key Features

- iBR\* - Intelligent Brake & Reverse
- Variable Trim System (VTS)
- Slow speed mode / speed regulator
- Boarding ladder
- Two color options



NEW Eclipse Black and Laguna Green



Teal Blue and Manta Green

Feature Highlights



**BRP Audio - Premium System (optional)**  
A factory-installed, truly waterproof Bluetooth\* audio system for an extra dose of fun and entertainment on the water.



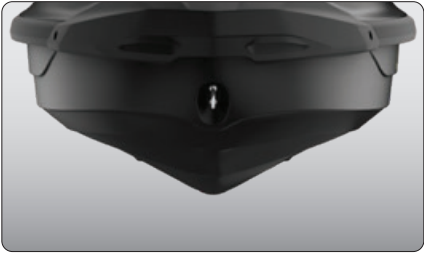
**Swim Platform with Integrated LinQ System**  
Exclusive quick-attach system on the largest swim platform in its category that allows for easy installation of accessories.<sup>1</sup>



**iDF - Intelligent Debris Free System**  
An innovative, industry-first system that allows you to free your pump of weeds and debris with intuitive handlebar-activated controls.



**Rotax 1630 ACE - 130 / 170**  
Enjoy plenty of pep and great fuel economy with the 1630 ACE - 130 or opt for the 170 hp version, the most powerful naturally aspirated engine in the Sea-Doo® lineup.



**GTI Hull**  
This moderate V-shaped hull guarantees a stable, enjoyable ride in variable water conditions. Confident, predictable handling but incredibly playful when you want it to be.



**Boarding Ladder**  
Makes boarding from the water easier and quicker.

<sup>1</sup> The mat holder is an accessory. The mat is not included.